

## KEY

---

--- Evacuation Route

---> Exit



Restroom



Fire Extinguisher



Fire Alarm



Area of Evacuation  
(Primary)

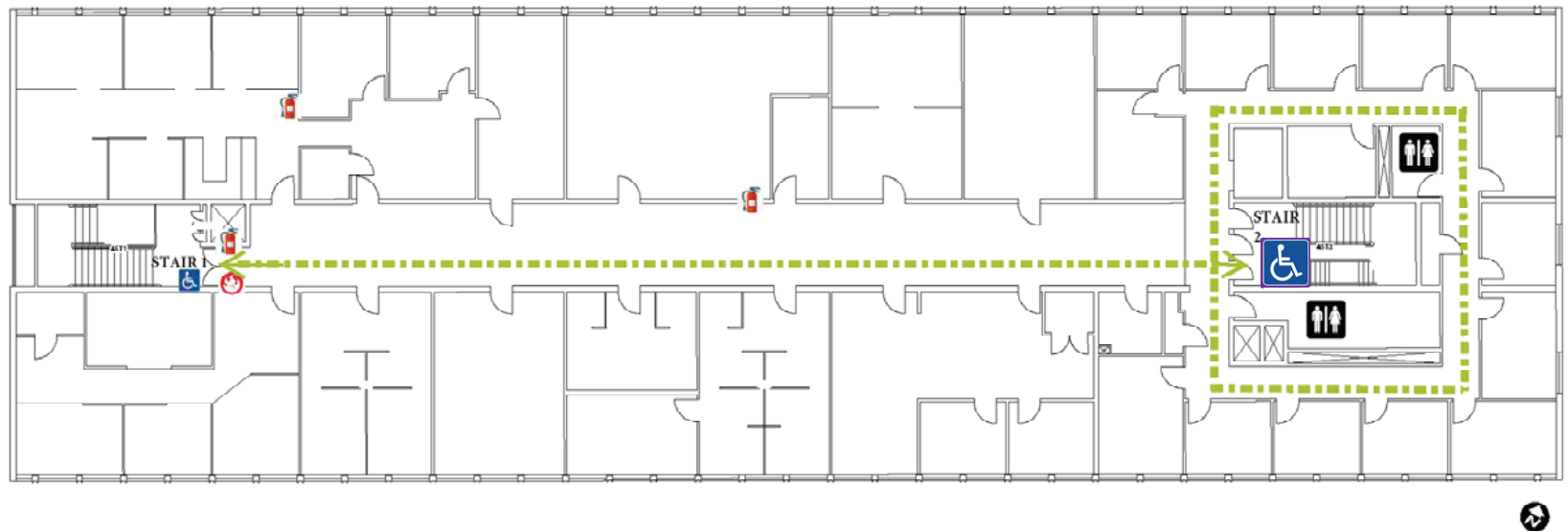


Area of Evacuation  
(Secondary)

## IF THERE IS AN EMERGENCY:

---

- Sound fire alarm.
- Assist persons with disabilities.
- Exit the building using the nearest exit. DO NOT USE THE ELEVATORS!
- Report to the nearest designated outside assembly area.
- Do not re-enter until authorized to do so.



# Sieg Hall 4<sup>th</sup> Floor