



KEY


- · - Evacuation Route


- · > Exit

 Restroom

 Fire Extinguisher

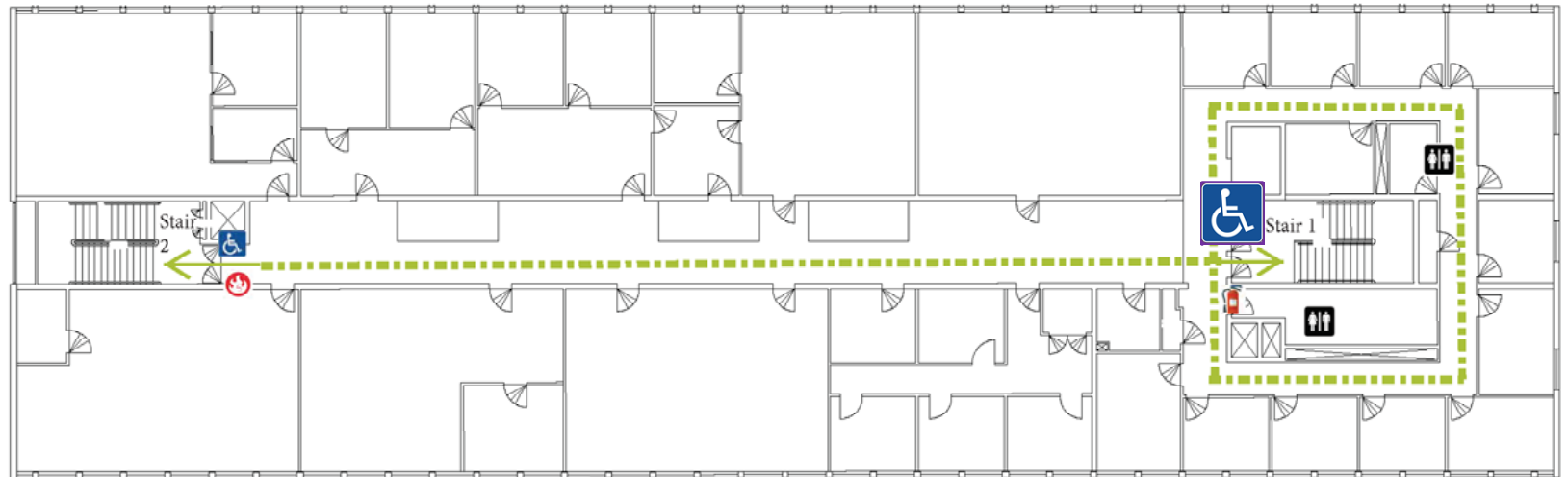
 Fire Alarm

 Area of Evacuation (Primary)

 Area of Evacuation (Secondary)

IF THERE IS AN EMERGENCY:

- Sound fire alarm.
- Assist persons with disabilities.
- Exit the building using the nearest exit. DO NOT USE THE ELEVATORS!
- Report to the nearest designated outside assembly area.
- Do not re-enter until authorized to do so.



Sieg Hall 3rd Floor