

KEY

--- Evacuation Route

---> Exit



Restroom



Fire Extinguisher



Fire Alarm



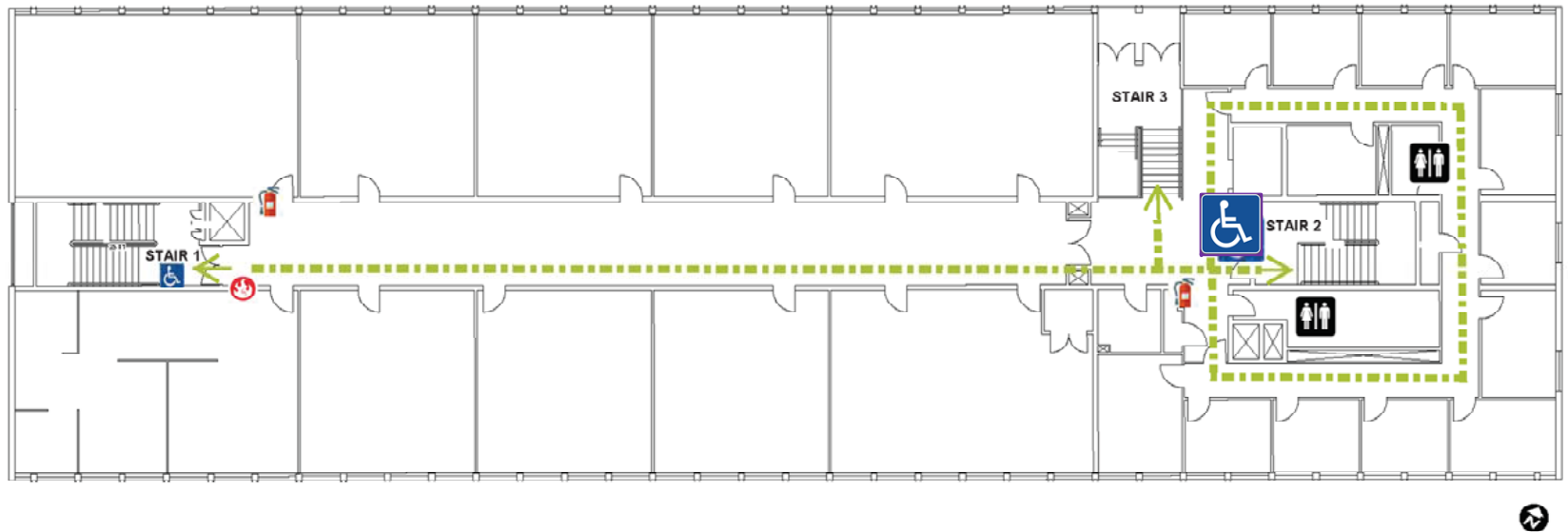
Area of Evacuation
(Primary)



Area of Evacuation
(Secondary)

IF THERE IS AN EMERGENCY:

- Sound fire alarm.
- Assist persons with disabilities.
- Exit the building using the nearest exit. DO NOT USE THE ELEVATORS!
- Report to the nearest designated outside assembly area.
- Do not re-enter until authorized to do so.



Sieg Hall 2nd Floor