


## KEY


---


--- Evacuation Route

---> Exit

 Restroom

 Fire Extinguisher

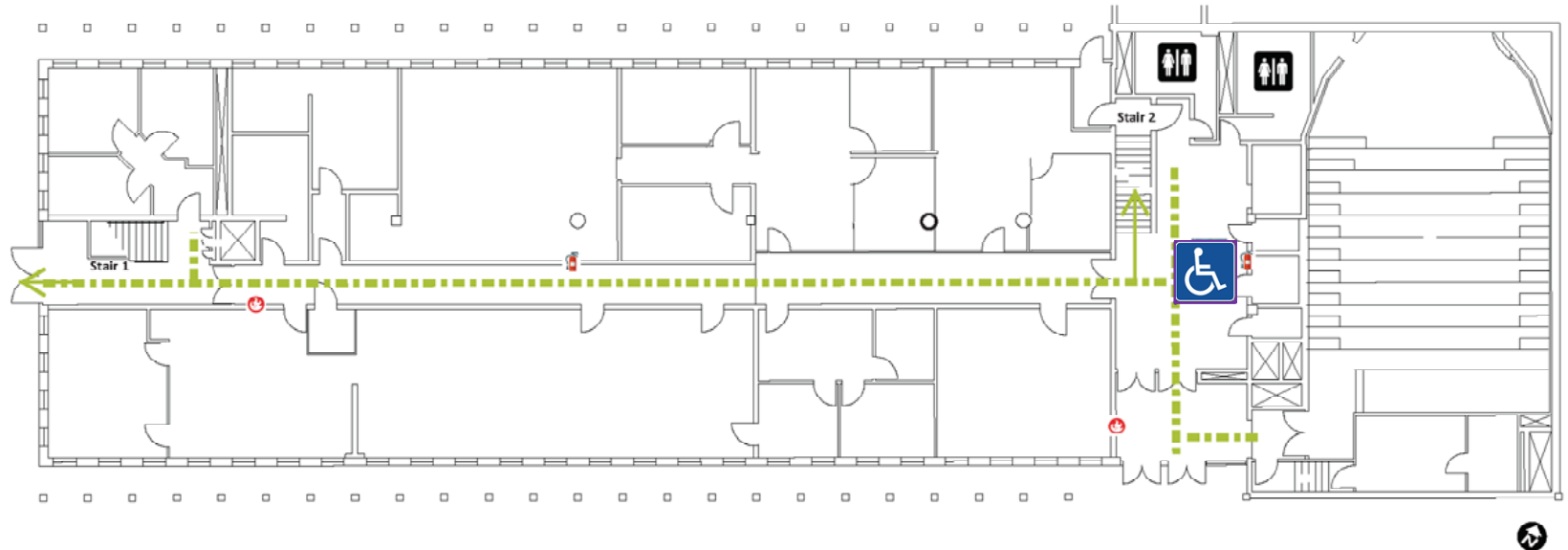
 Fire Alarm

 Area of Evacuation (Primary)

## IF THERE IS AN EMERGENCY:

---

- Sound fire alarm.
- Assist persons with disabilities.
- Exit the building using the nearest exit. **DO NOT USE THE ELEVATORS!**
- Report to the nearest designated outside assembly area.
- Do not re-enter until authorized to do so.



# Sieg Hall 1<sup>st</sup> Floor